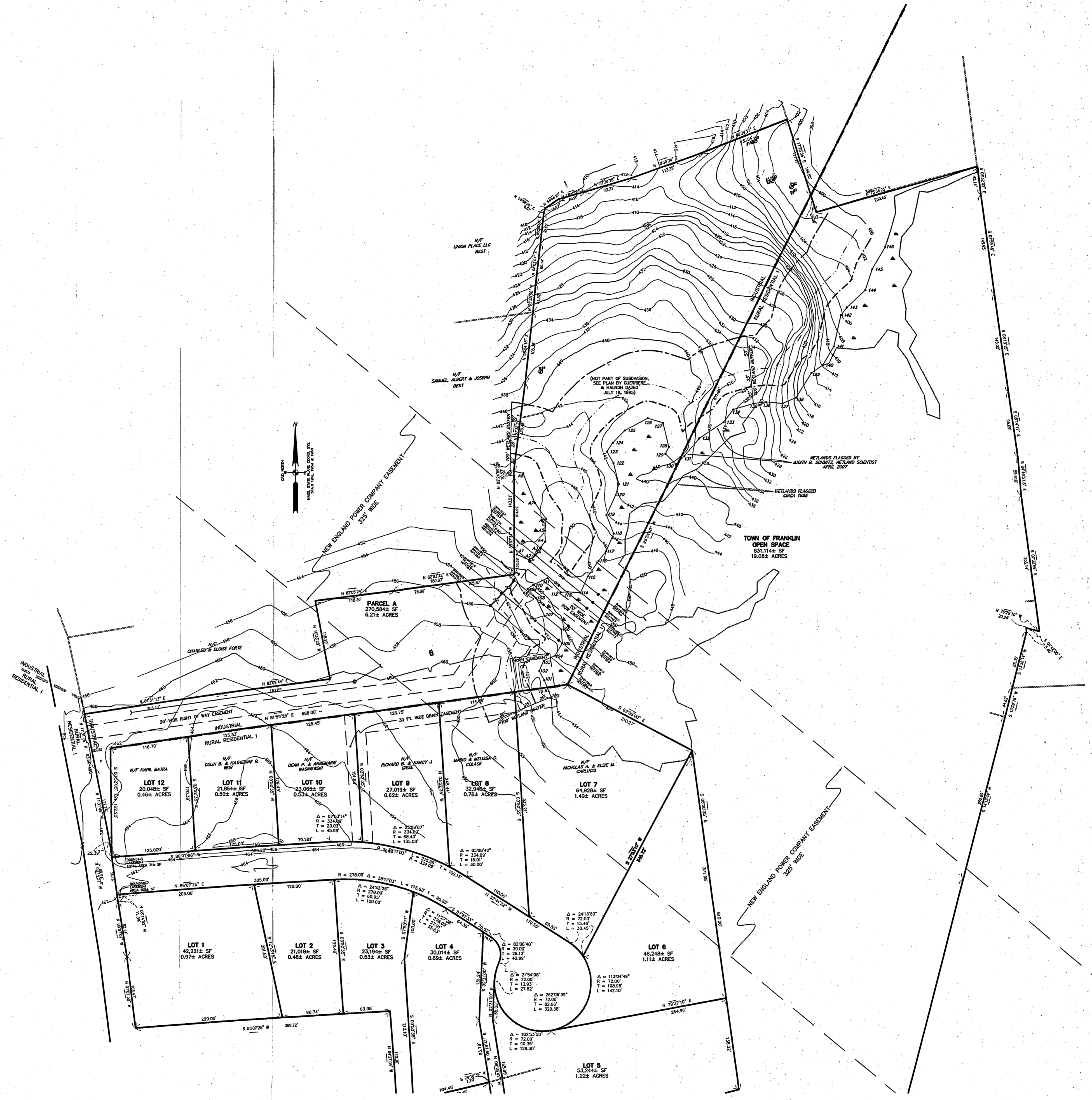


**LEGEND**

- ⊠ CATCH BASIN
- ⊙ DRAIN MANHOLE
- ⊙ ELECTRIC MANHOLE
- ⊙ SEWER MANHOLE
- ⊙ MANHOLE
- ⊠ CONCRETE PAD
- ⊠ GAS VALVE
- ⊠ GAS SHUT OFF VALVE
- ⊠ GAS METER
- ⊠ WATERGATE
- ⊠ WATER SHUT OFF VALVE
- ⊠ FIRE HYDRANT
- POST
- VCC VERTICAL CONC CURB
- TEST PITS BY GUERRIERE AND HALNON
- ☆ LIGHT POLE
- ⊙ UTILITY POLE
- ⊙ GUY WIRE
- ⊙ SIGN
- ⊙ WETFLAG
- TREE
- TREE LINE
- SEWER LINE
- DRAIN LINE
- W WATER LINE
- GAS LINE
- EP EDGE OF PAVEMENT
- BB BITUMINOUS BERM
- GC GRANITE CURB
- BC BITUMINOUS CURB
- RW RETAINING WALL
- × 000.0 SPOT ELEVATION



SITE PLAN  
 APPROVED DATE \_\_\_\_\_  
 FRANKLIN PLANNING BOARD

DATE: \_\_\_\_\_

**PROGRESS PRINT**

APPLICANT:  
 J & J LAND DEVELOPMENT  
 P.O. BOX 454  
 FRANKLIN, MA 02038

REVISIONS	
DATE	REVISED

**Guerriere & Halnon, Inc.**  
 Engineering & Land Surveying  
 Ph. (508) 528-3221 38 POND STREET, STE 206  
 Fr. (508) 528-7921 FRANKLIN, MASS. 02038  
 www.guerriereandhalnon.com

**SITE OVERVIEW  
 FOR  
 UPPER UNION STREET  
 GARAGE AND OFFICE  
 PLAN OF LAND  
 IN  
 FRANKLIN  
 MASSACHUSETTS**

DATE MAY 2007	SCALE 1"=80'
SHEET 1 OF 1	JOB NO. F3380 (REF. F0001)

CONSTRUCTION ON THIS LAND IS SUBJECT TO ANY EASEMENTS, RIGHTS-OF-WAY, RESTRICTIONS, RESERVATIONS, OR OTHER LIMITATIONS WHICH MAY BE REVEALED BY AN EXAMINATION OF THE TITLE.

JOB

3484