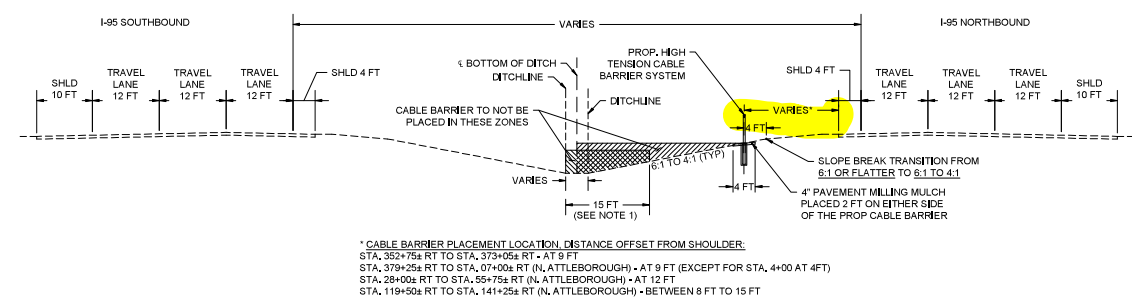
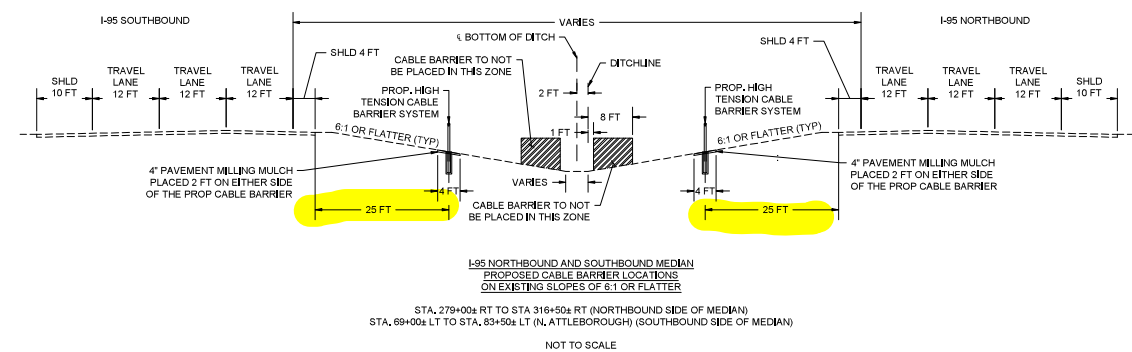
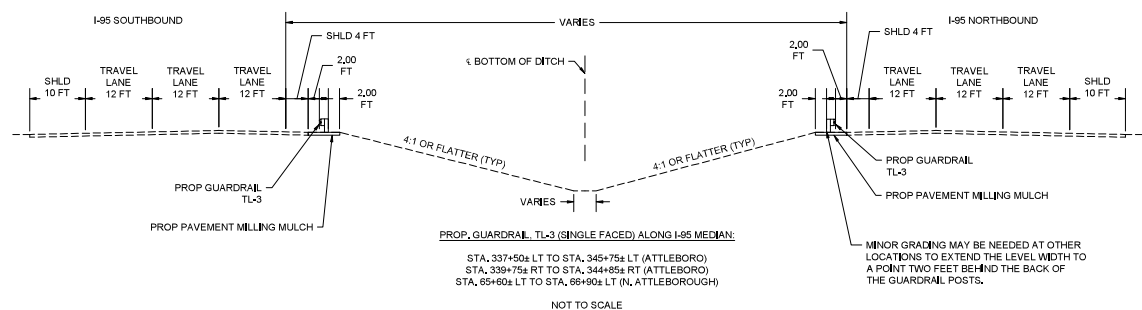


ATTLEBORO/NORTH ATTLEBOROUGH  
I-95 MEDIAN CABLE BARRIER INSTALLATION

STATE	FED. AID PROJ. NO.	SHEET NO.	TOTAL SHEETS
MA	H8-0958(133)X	07	23
PROJECT FILE NO.		609433	

TYPICAL SECTIONS - 1



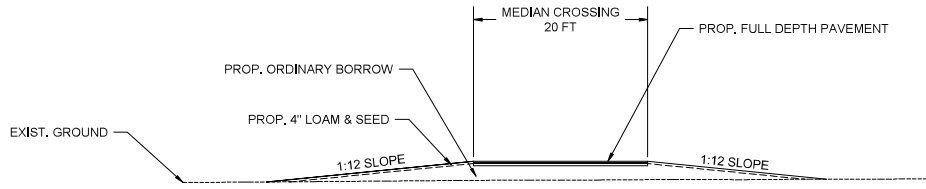
NOTE:

- HIGH TENSION CABLE BARRIER SHALL NOT BE PLACED GREATER THAN 4' DOWN A SLOPE BETWEEN 4:1 TO 6:1. ADDITIONALLY, HIGH TENSION CABLE BARRIER SHALL BE PLACED A MINIMUM OF 15' FROM THE OPPOSITE SIDE OF THE DITCH BOTTOM.
- AT LOCATIONS WHERE UNDERGROUND UTILITY CONDUITS, SUCH AS DRAINAGE CONDUITS, ARE AT OR NEAR THE PROPOSED CABLE BARRIER LOCATIONS, LINE POST SPACING LENGTH SHALL BE ADJUSTED ACCORDINGLY (PER MANUFACTURER SPECIFICATION REQUIREMENT) TO AVOID UTILITY CONDUIT CONFLICT.

ATTLEBORO/NORTH ATTLEBOROUGH  
I-95 MEDIAN CABLE BARRIER INSTALLATION

STATE	FED. AID PROJ. NO.	SHEET NO.	TOTAL SHEETS
MA	HS-095S(133)X	08	23
PROJECT FILE NO.		609433	

TYPICAL SECTIONS - 2

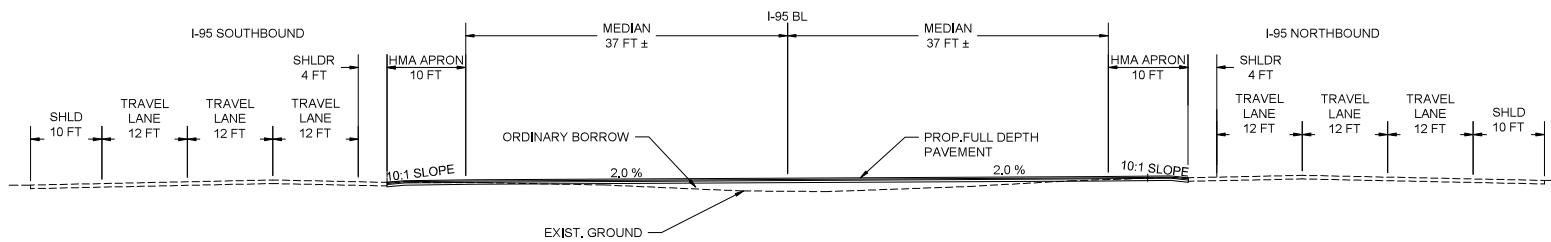


I-95 NORTHBOUND AND SOUTHBOUND  
PROPOSED TURNAROUND  
SECTION A-A  
APPROX. STA. 119+25 (N. ATTLEBOROUGH)  
NOT TO SCALE

PAVEMENT NOTES

PROPOSED FULL DEPTH PAVEMENT

1.5" SUPERPAVE SURFACE COURSE - 12.5 (SSC - 12.5) OVER  
2.5" SUPERPAVE INTERMEDIATE COURSE - 12.5 (SIC - 12.5) OVER  
8" GRAVEL BORROW TYPE B



I-95 NORTHBOUND AND SOUTHBOUND  
PROPOSED TURNAROUND  
SECTION B-B  
APPROX. STA. 119+25 (N. ATTLEBOROUGH)

NOT TO SCALE

**HIGHWAY GUARD DETAILS**

PROP. HIGH TENSION CABLE BARRIER END TREATMENT STA. 279+00± RT  
 PROP. HIGH TENSION CABLE BARRIER STA. 279+00± RT TO STA 316+50± RT  
 (INCLUSIVE OF END TREATMENT)

**TRAFFIC SIGNAL CONDUIT**

NONE

**WATER SUPPLY ALTERATIONS**

NONE

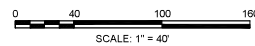
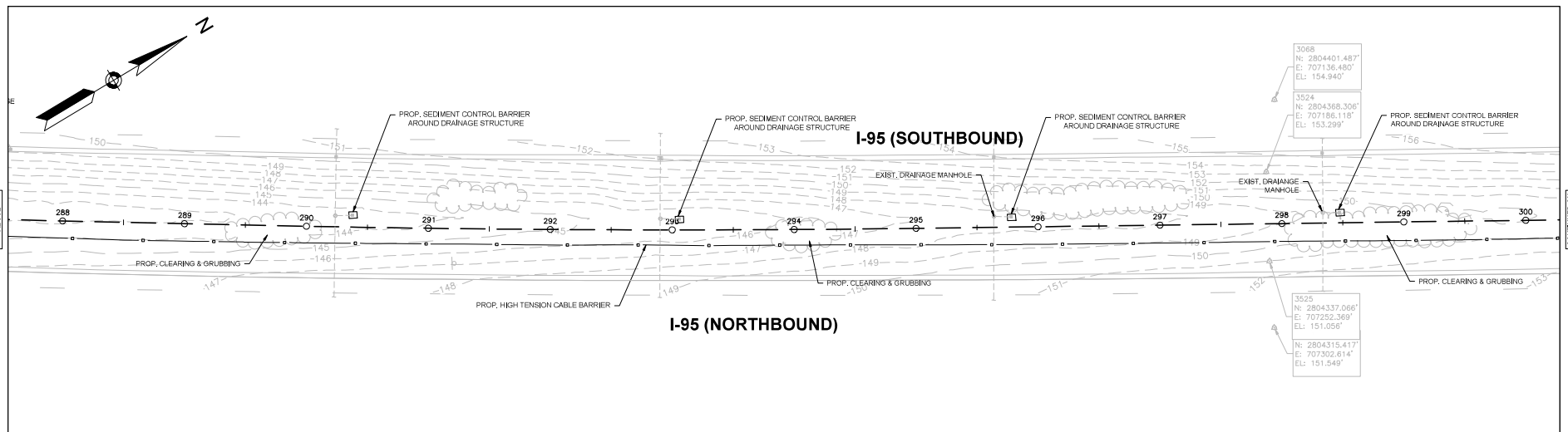
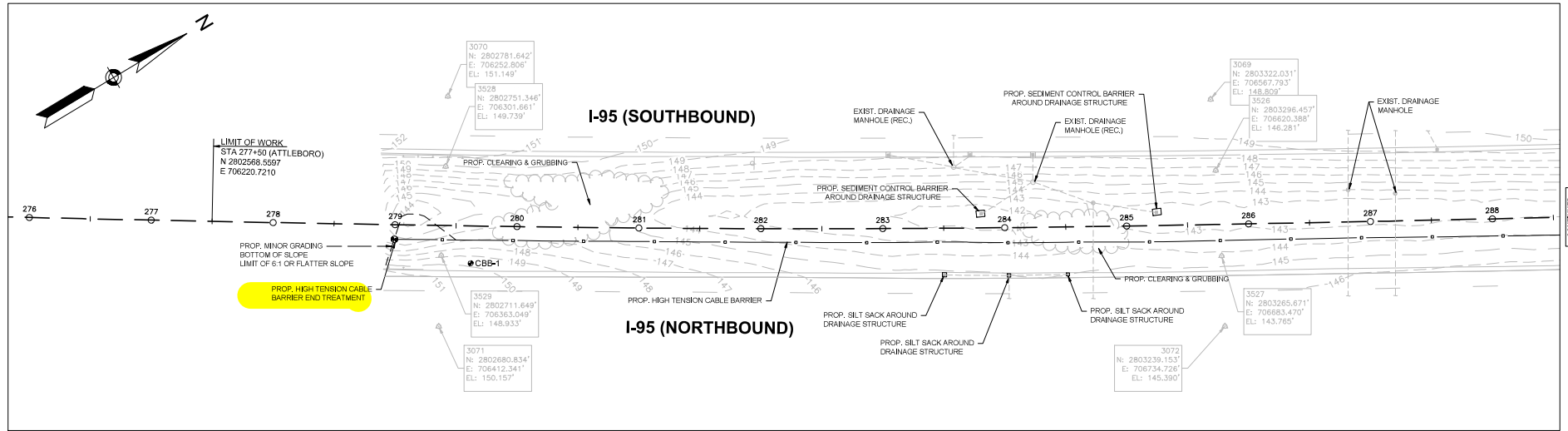
**DRAINAGE DETAILS**

NONE

**ATTLEBORO/NORTH ATTLEBOROUGH  
 I-95 MEDIAN CABLE BARRIER INSTALLATION**

STATE	FED. AID PROJ. NO.	SHEET NO.	TOTAL SHEETS
MA	HS-095S(133)X	09	23
PROJECT FILE NO. 609433			

**CONSTRUCTION PLANS**



CONTINUED BELOW

CONTINUED ON SHEET NO. 9

ATTLEBORO/NORTH ATTLEBOROUGH  
I-95 MEDIAN CABLE BARRIER INSTALLATION

STATE	FED. AID PROJ. NO.	SHEET NO.	TOTAL SHEETS
MA	HS1-095S(133)X	10	23
PROJECT FILE NO.		609433	

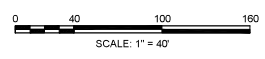
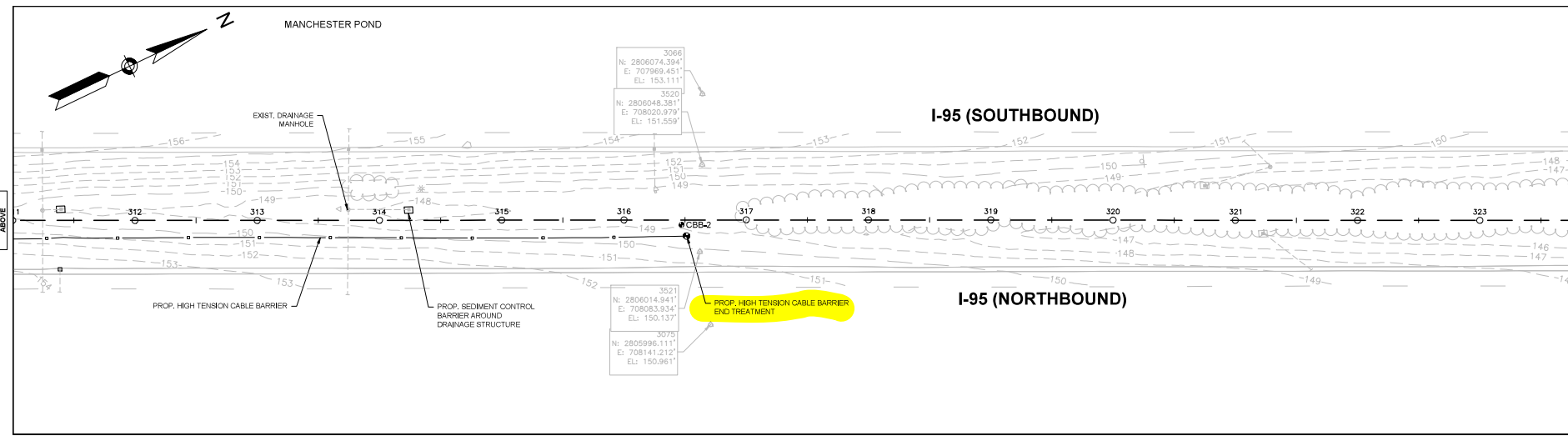
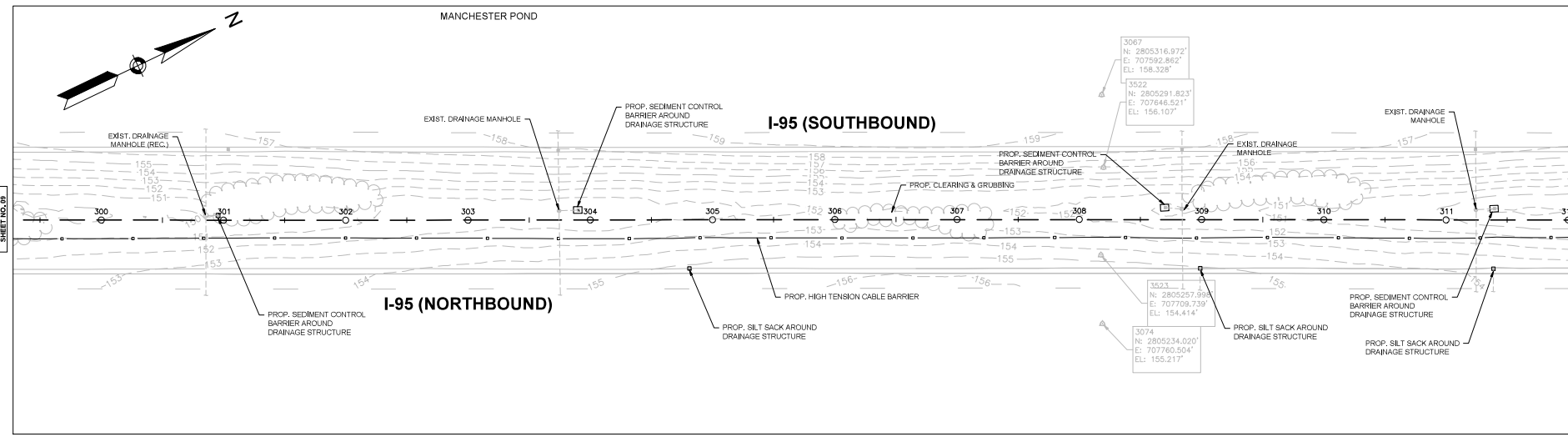
CONSTRUCTION PLANS

HIGHWAY GUARD DETAILS  
PROP. HIGH TENSION CABLE BARRIER END TREATMENT STA. 316+50± RT  
PROP. HIGH TENSION CABLE BARRIER STA. 279+00± RT TO STA 316+50± RT  
(INCLUSIVE OF END TREATMENT)

TRAFFIC SIGNAL CONDUIT  
NONE

WATER SUPPLY ALTERATIONS  
NONE

DRAINAGE DETAILS  
NONE



CONTINUED FROM SHEET NO. 09

CONTINUED BELOW

CONTINUED ABOVE

CONTINUED ON SHEET NO. 11

HIGHWAY GUARD DETAILS

PROP. GUARDRAIL, TL-3 (SINGLE FACED) STA. 337+50± LT TO STA. 345+75± LT  
 PROP. GUARDRAIL, TL-3 (SINGLE FACED) STA. 339+75± RT TO STA. 344+85± RT

R&D EXIST. TANGENT END TREATMENT AND TRANSITION BEAM STA. 337+50± LT TO 338+00± LT  
 R&D EXIST. TANGENT END TREATMENT AND TRANSITION BEAM STA. 344+35± RT TO 344+85± RT

PROP. TRANSITION TO THRIE BEAM (ITEM 628.25) STA. 337+50± LT, STA. 345+75± LT, STA. 339+75± RT, AND STA. 344+85 ± RT

TRAFFIC SIGNAL CONDUIT

NONE

WATER SUPPLY ALTERATIONS

NONE

DRAINAGE DETAILS

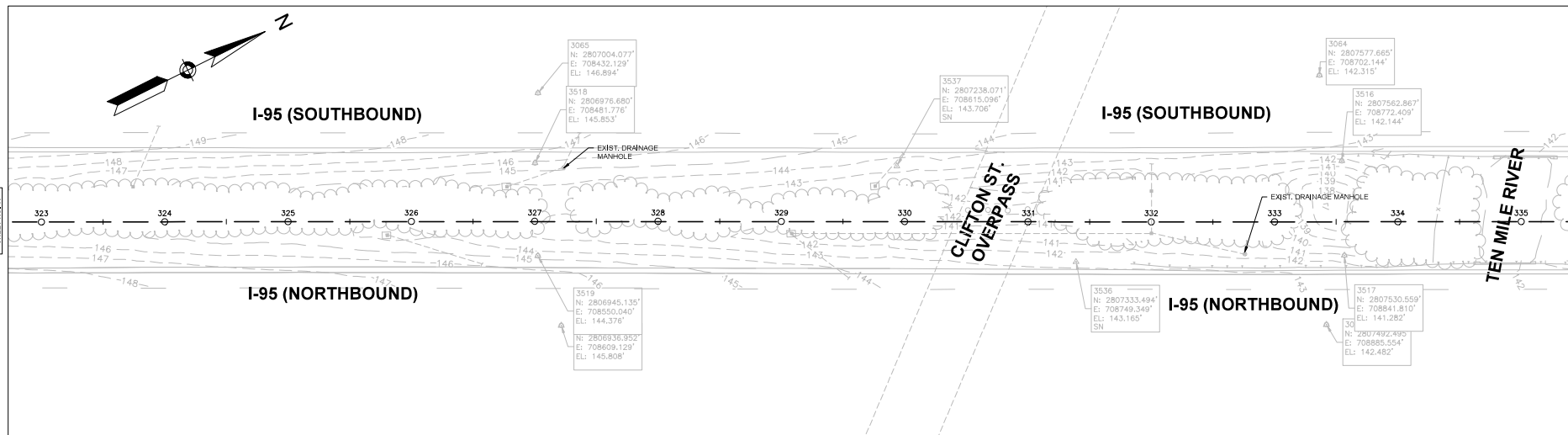
NONE

ATTEBORON/NORTH ATTEBOROUGH  
 I-95 MEDIAN CABLE BARRIER INSTALLATION

STATE	FED. AID PROJ. NO.	SHEET NO.	TOTAL SHEETS
MA	HS4-095S(133)X	11	23
PROJECT FILE NO. 609433			

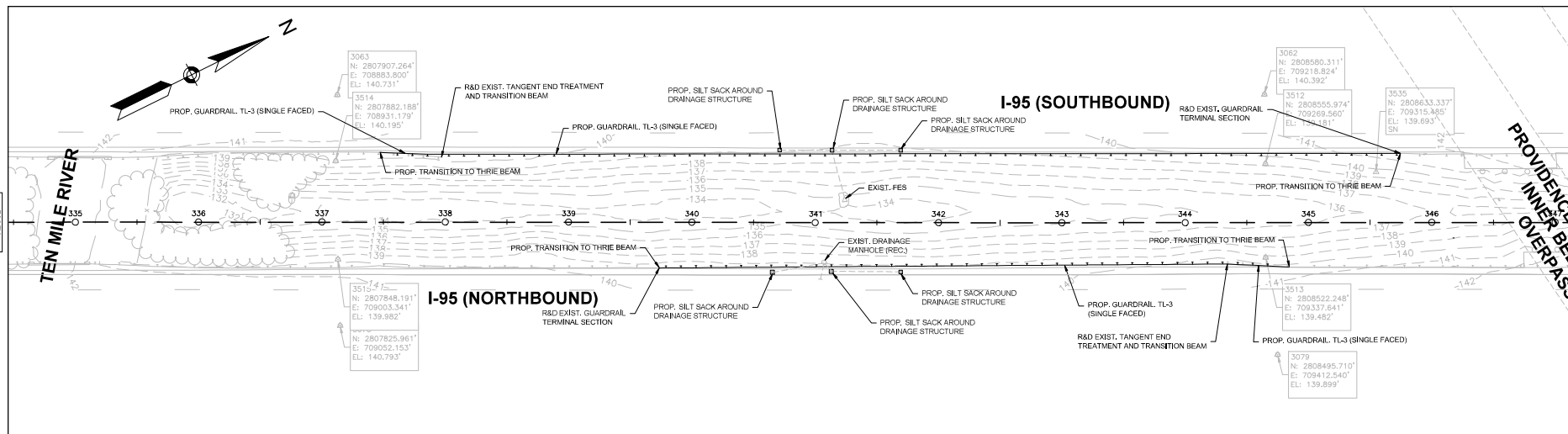
CONSTRUCTION PLANS

CONTINUED FROM SHEET NO. 10

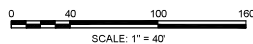


CONTINUED BELOW

CONTINUED ABOVE



CONTINUED ON SHEET NO. 12



ATTLEBORON/NORTH ATTLEBOROUGH  
I-95 MEDIAN CABLE BARRIER INSTALLATION

STATE	FED. AID PROJ. NO.	SHEET NO.	TOTAL SHEETS
MA	HS1-095S(133)X	12	23
PROJECT FILE NO.		609433	

CONSTRUCTION PLANS

HIGHWAY GUARD DETAILS

PROP. HIGH TENSION CABLE BARRIER END TREATMENT STA. 352+75± RT  
PROP. HIGH TENSION CABLE BARRIER STA. 352+75± RT TO STA. 373+05± RT  
(INCLUSIVE OF END TREATMENT)

TRAFFIC SIGNAL CONDUIT

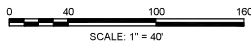
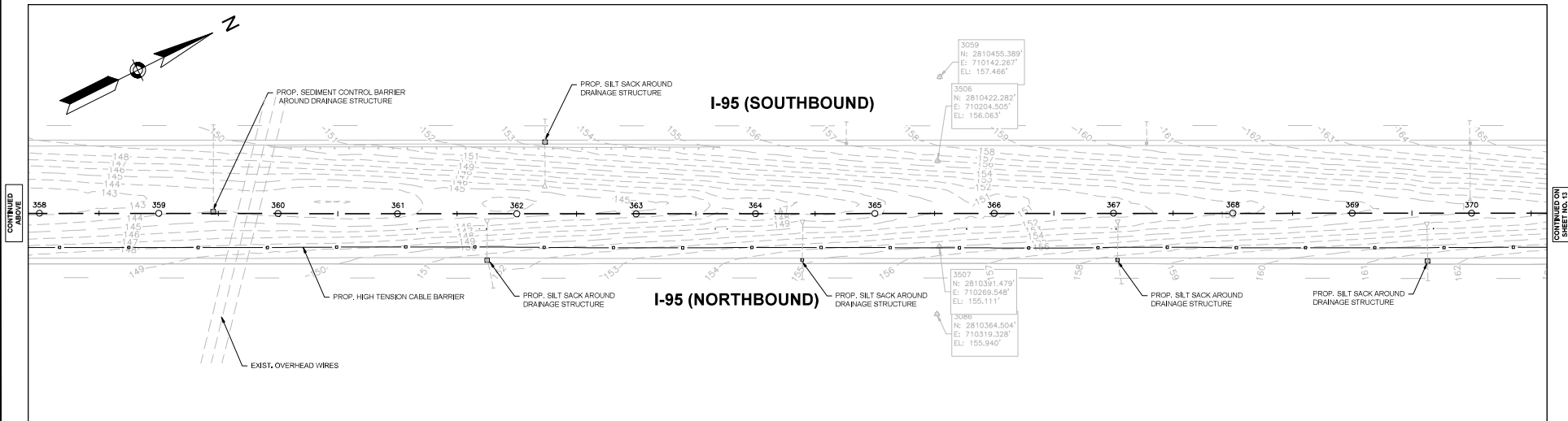
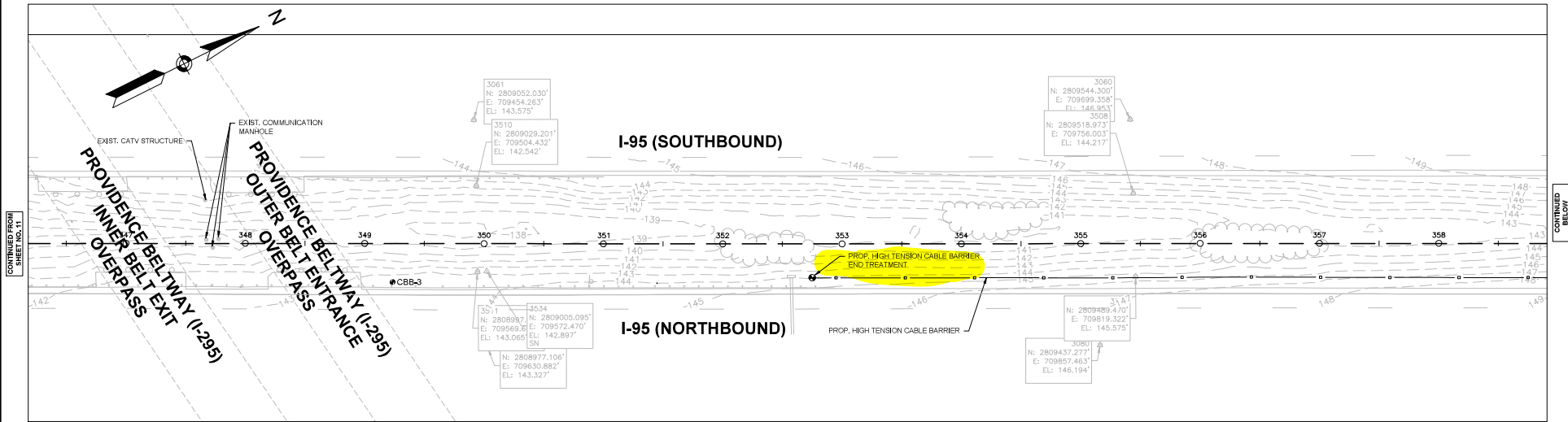
NONE

WATER SUPPLY ALTERATIONS

NONE

DRAINAGE DETAILS

NONE



CONTINUED FROM SHEET NO. 11

CONTINUED BELOW

CONTINUED ABOVE

CONTINUED ON SHEET NO. 13

HIGHWAY GUARD DETAILS

PROP. HIGH TENSION CABLE BARRIER END TREATMENT STA. 373+05± RT  
 PROP. HIGH TENSION CABLE BARRIER END TREATMENT STA. 379+25± RT  
 PROP. HIGH TENSION CABLE BARRIER STA. 352+75± RT TO STA. 373+05± RT  
 (INCLUSIVE OF END TREATMENT)  
 PROP. HIGH TENSION CABLE BARRIER STA. 379+25± RT TO STA. 07+00± RT  
 (INCLUSIVE OF END TREATMENT)

TRAFFIC SIGNAL CONDUIT

NONE

WATER SUPPLY ALTERATIONS

NONE

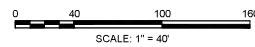
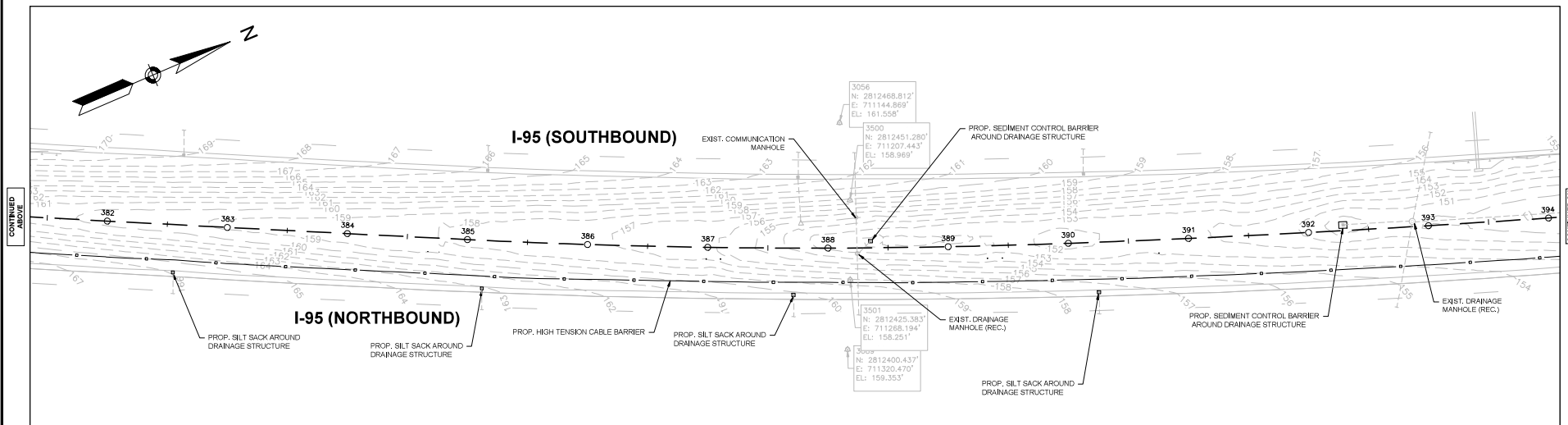
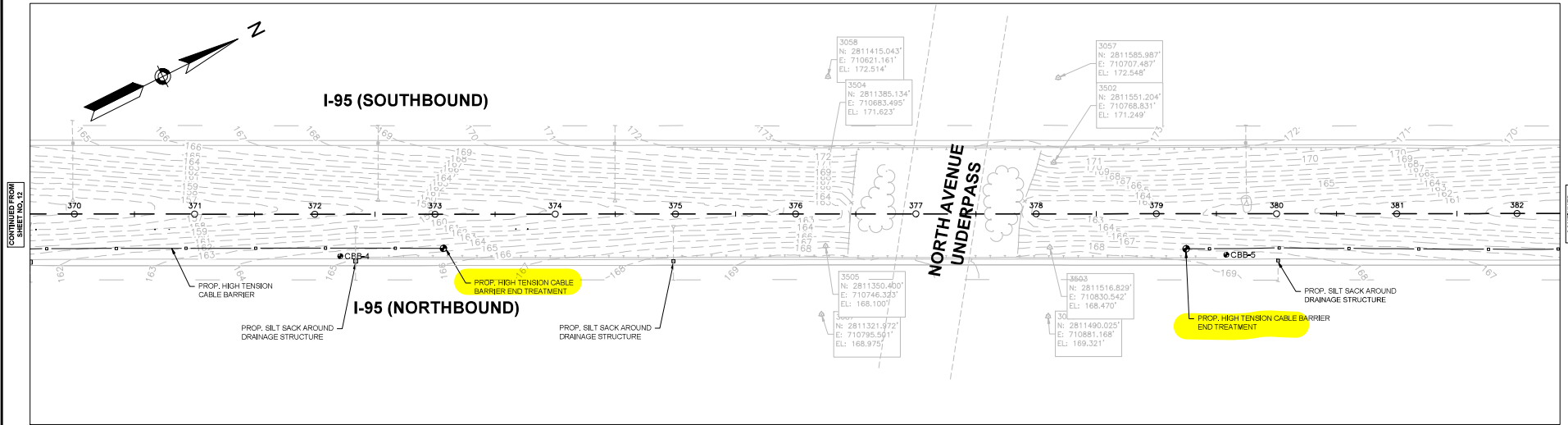
DRAINAGE DETAILS

NONE

ATTLEBORO/NORTH ATTLEBOROUGH  
 I-95 MEDIAN CABLE BARRIER INSTALLATION

STATE	FED. AID PROJ. NO.	SHEET NO.	TOTAL SHEETS
MA	HS-095S(133)X	13	23
PROJECT FILE NO.		609433	

CONSTRUCTION PLANS



CONTINUED FROM SHEET NO. 12

CONTINUE BELOW

CONTINUED ABOVE

CONTINUE ON SHEET NO. 14

ATLEBORO/NORTH ATLEBOROUGH  
I-95 MEDIAN CABLE BARRIER INSTALLATION

STATE	FED. AID PROJ. NO.	SHEET NO.	TOTAL SHEETS
MA	HS4-095S(133)X	14	23
PROJECT FILE NO. 609433			

CONSTRUCTION PLANS

HIGHWAY GUARD DETAILS

PROP. HIGH TENSION CABLE BARRIER END TREATMENT STA. 7+00± RT  
PROP. HIGH TENSION CABLE BARRIER STA. 379+25± RT TO STA. 07+00± RT  
(INCLUSIVE OF END TREATMENT)

TRAFFIC SIGNAL CONDUIT

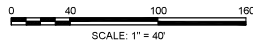
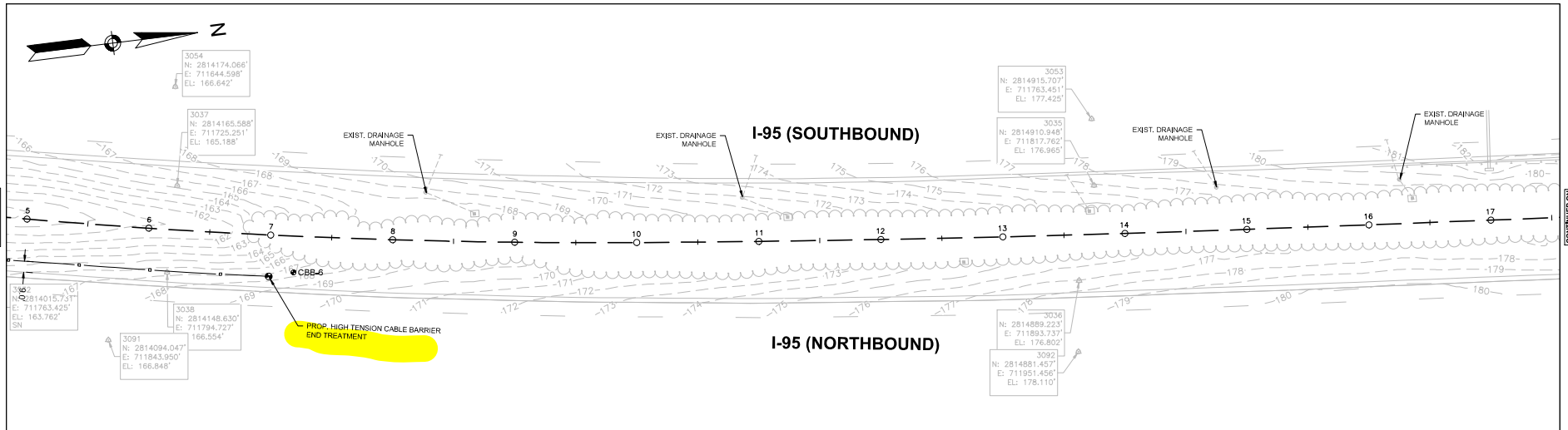
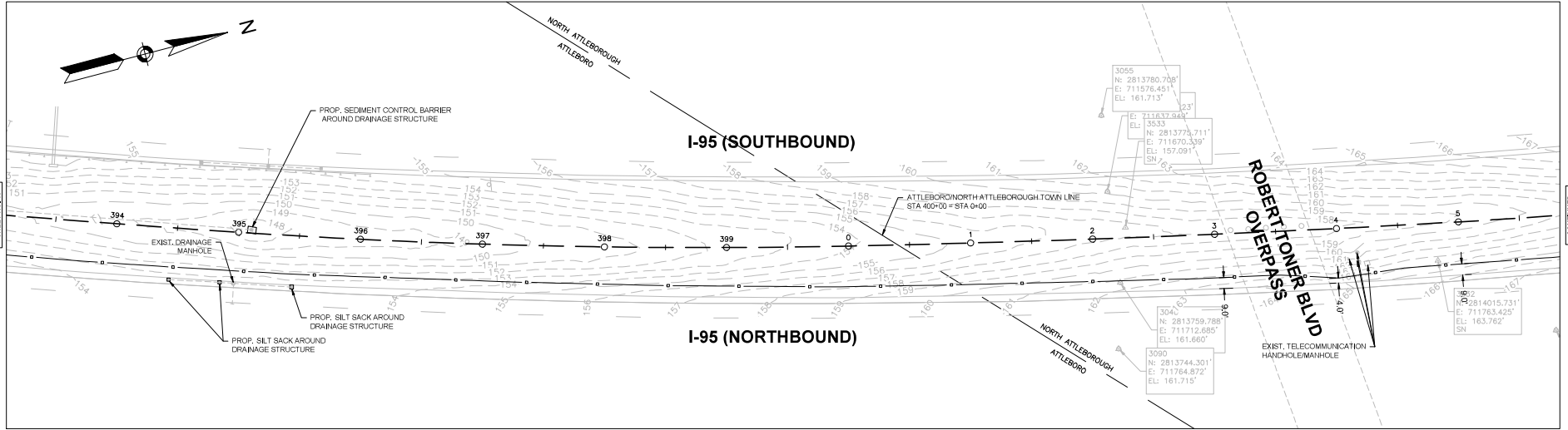
NONE

WATER SUPPLY ALTERATIONS

NONE

DRAINAGE DETAILS

NONE



68043\_HDC/CVST PLANS.DWG P:\dms on 15-aug-2023 4:41 PM

CONTINUED BELOW

CONTINUED ON SHEET NO. 13



**ATTLEBORO/NORTH ATTLEBOROUGH  
I-95 MEDIAN CABLE BARRIER INSTALLATION**

STATE	FED. AID PROJ. NO.	SHEET NO.	TOTAL SHEETS
MA	HSR-095S(133)X	15	23
PROJECT FILE NO. 609433			

**CONSTRUCTION PLANS**

**HIGHWAY GUARD DETAILS**

PROP. HIGH TENSION CABLE BARRIER END TREATMENT STA. 28+00± RT  
 PROP. HIGH TENSION CABLE BARRIER STA. 28+00± RT TO STA. 55+75± RT  
 (INCLUSIVE OF END TREATMENT)

**TRAFFIC SIGNAL CONDUIT**

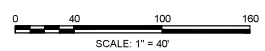
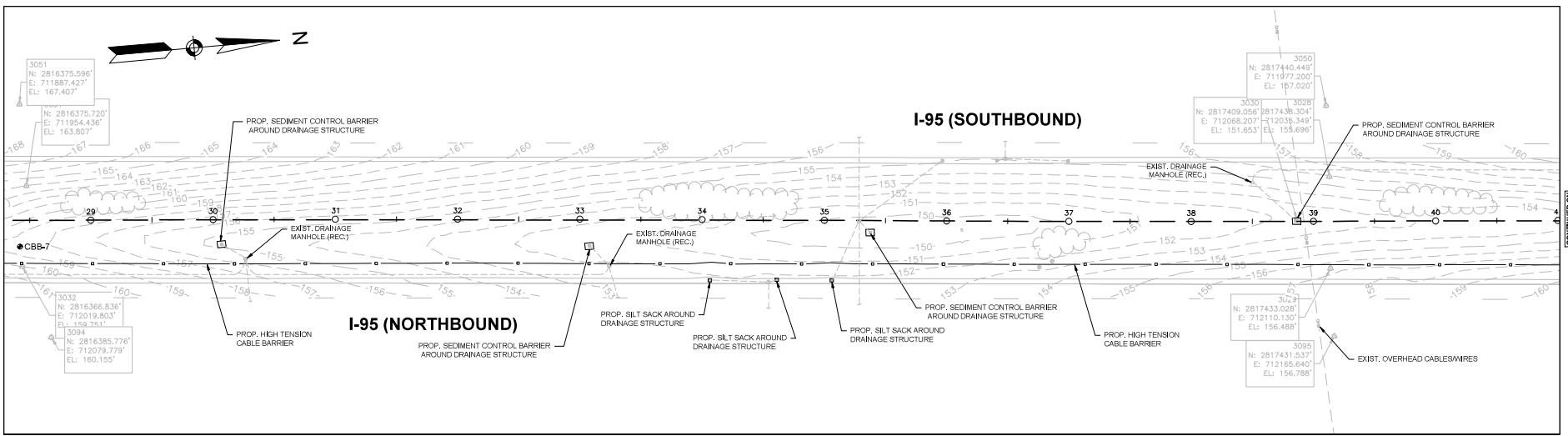
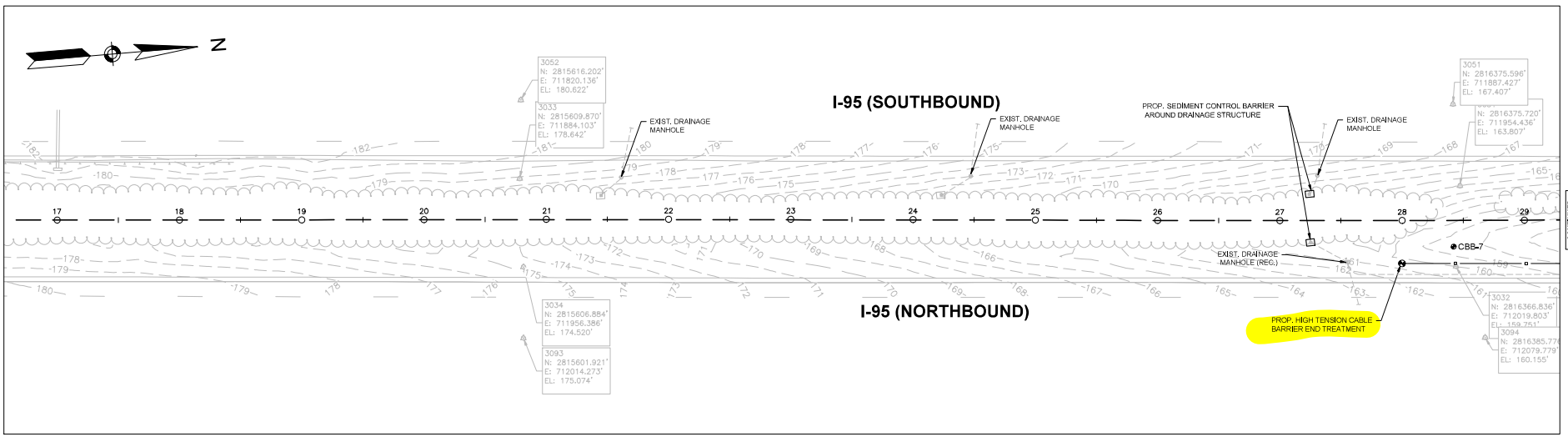
NONE

**WATER SUPPLY ALTERATIONS**

NONE

**DRAINAGE DETAILS**

NONE



CONTINUED FROM  
SHEET NO. 14

CONTINUED  
BELOW

CONTINUED  
ABOVE

CONTINUED ON  
SHEET NO. 16

**HIGHWAY GUARD DETAILS**

PROP. HIGH TENSION CABLE BARRIER END TREATMENT STA. 55+75± RT  
 PROP. HIGH TENSION CABLE BARRIER STA. 28+00± RT TO STA. 55+75± RT  
 (INCLUSIVE OF END TREATMENT)

**TRAFFIC SIGNAL CONDUIT**

NONE

**WATER SUPPLY ALTERATIONS**

NONE

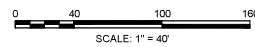
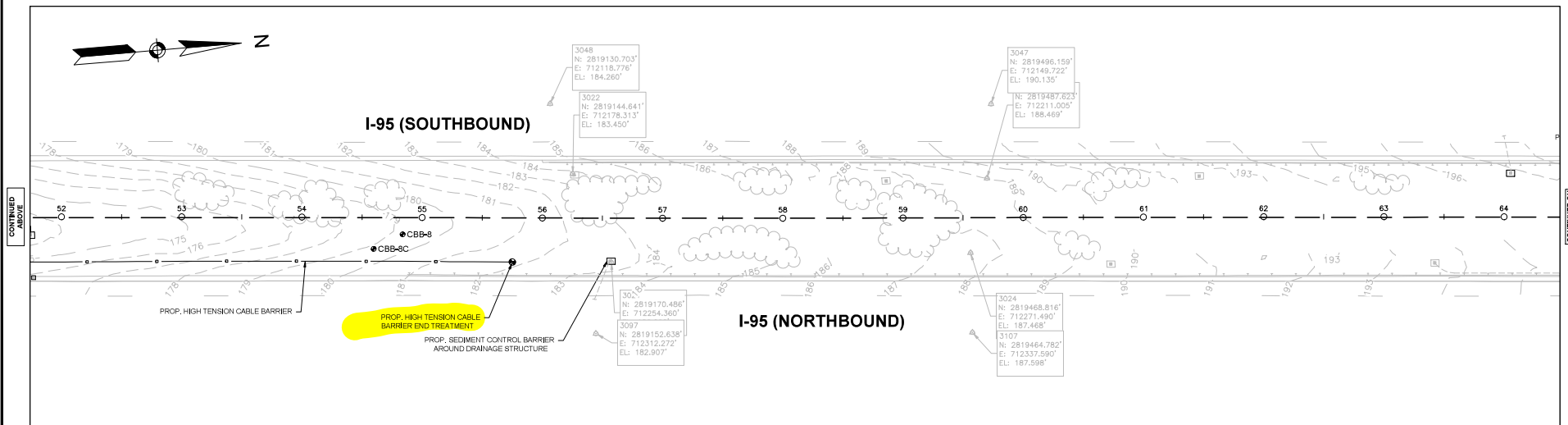
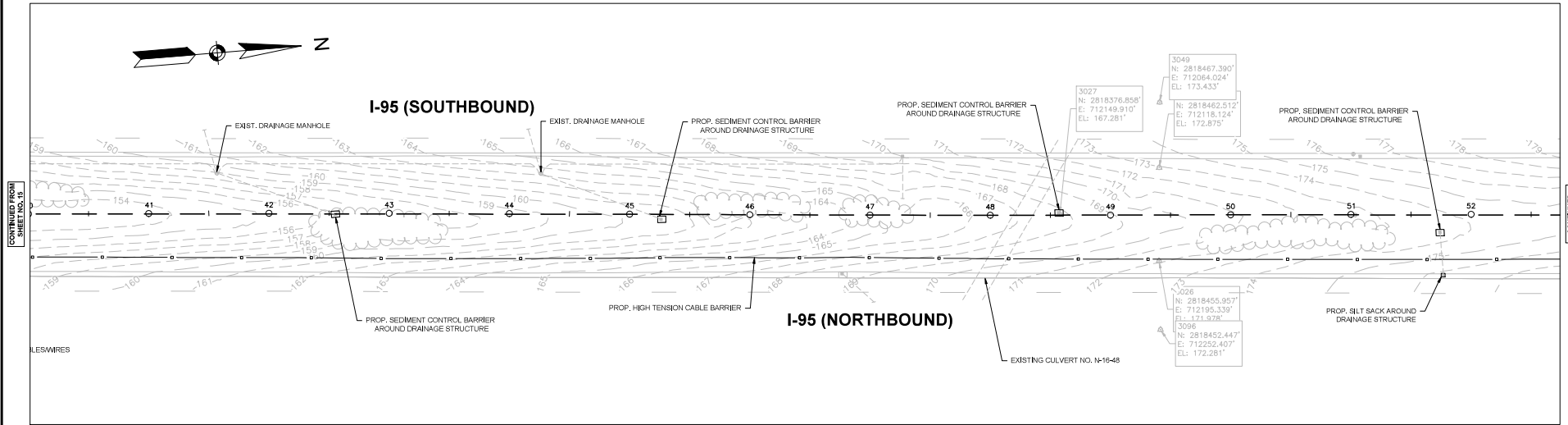
**DRAINAGE DETAILS**

NONE

**ATTLEBORO/NORTH ATTLEBOROUGH  
 I-95 MEDIAN CABLE BARRIER INSTALLATION**

STATE	FED. AID PROJ. NO.	SHEET NO.	TOTAL SHEETS
MA	HSR-095S(133)X	16	23
PROJECT FILE NO.		609433	

**CONSTRUCTION PLANS**



CONTINUED FROM SHEET NO. 15

CONTINUED BELOW

CONTINUED ABOVE

CONTINUED ON SHEET NO. 17

**HIGHWAY GUARD DETAILS**

PROP. HIGH TENSION CABLE BARRIER END TREATMENT STA. 69+00± LT  
 PROP. HIGH TENSION CABLE BARRIER END TREATMENT STA. 83+50± LT  
 PROP. HIGH TENSION CABLE BARRIER STA. 69+00± LT TO STA. 83+50± LT  
 (INCLUSIVE OF END TREATMENT)

PROP. GUARDRAIL TL-3 (SINGLE FACED) STA. 65+60± LT TO STA. 66+90± LT  
 R&D EXIST. TANGENT END TREATMENT AND TRANSITION BEAM STA. 65+60± LT TO STA. 66+10± LT  
 PROP. TRANSITION TO THRIE BEAM (ITEM 628.25) STA. 65+60± LT

**TRAFFIC SIGNAL CONDUIT**

NONE

**WATER SUPPLY ALTERATIONS**

NONE

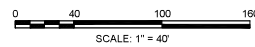
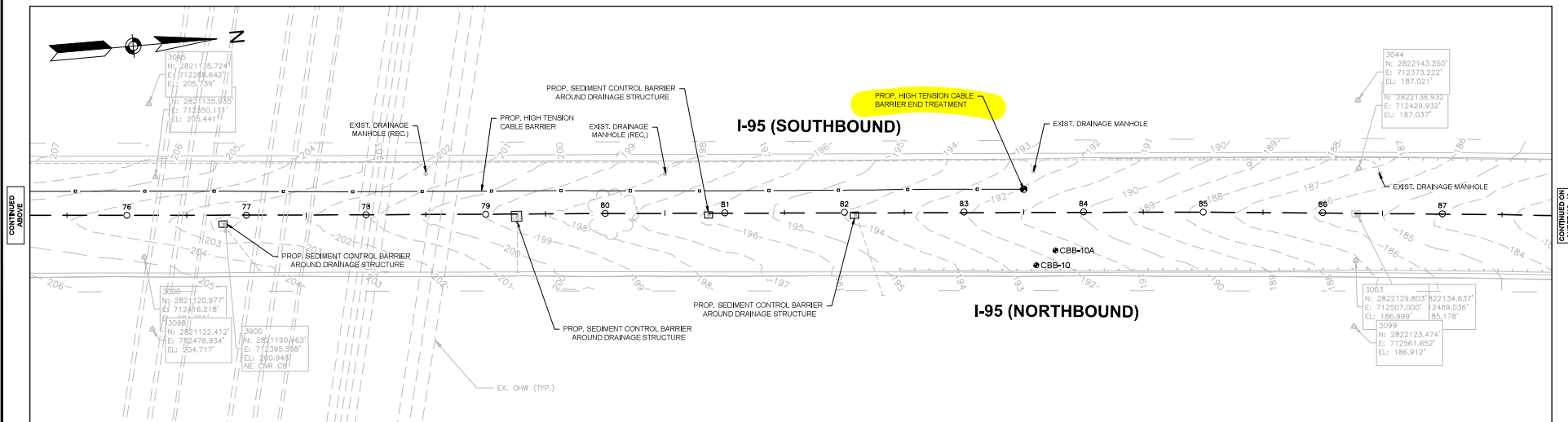
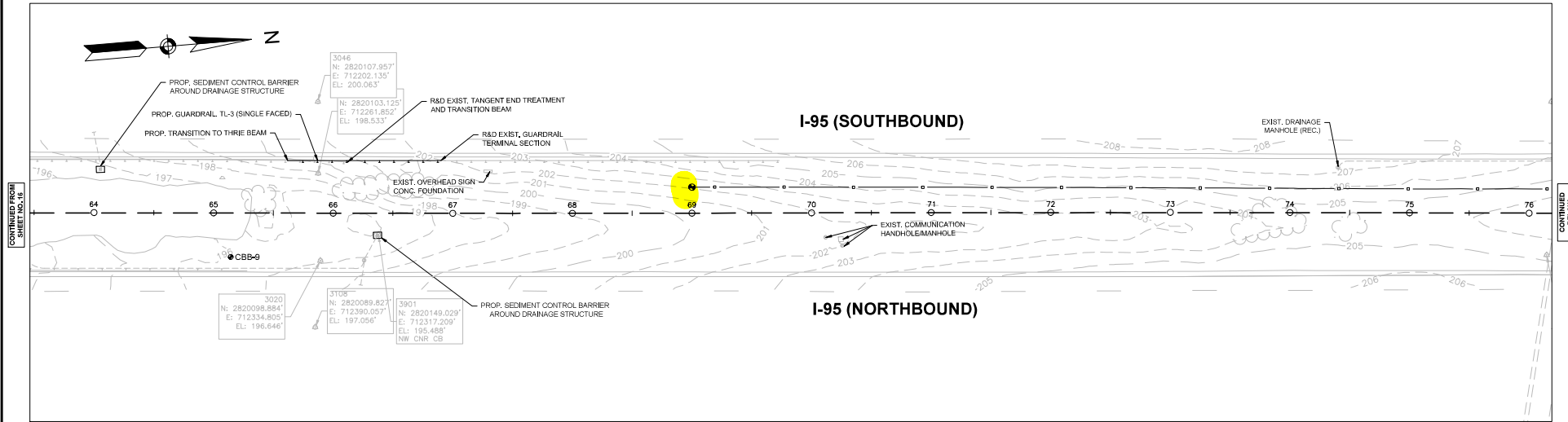
**DRAINAGE DETAILS**

NONE

**ATTLEBORO/NORTH ATTLEBOROUGH  
 I-95 MEDIAN CABLE BARRIER INSTALLATION**

STATE	FED. AID PROJ. NO.	SHEET NO.	TOTAL SHEETS
MA	HS1-095S(133)X	17	23
PROJECT FILE NO. 609433			

**CONSTRUCTION PLANS**



CONTINUED FROM SHEET NO. 16

CONTINUED BELOW

CONTINUED FROM SHEET NO. 15

CONTINUED FROM SHEET NO. 18

HIGHWAY GUARD DETAILS  
NONE

TRAFFIC SIGNAL CONDUIT  
NONE

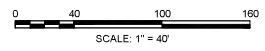
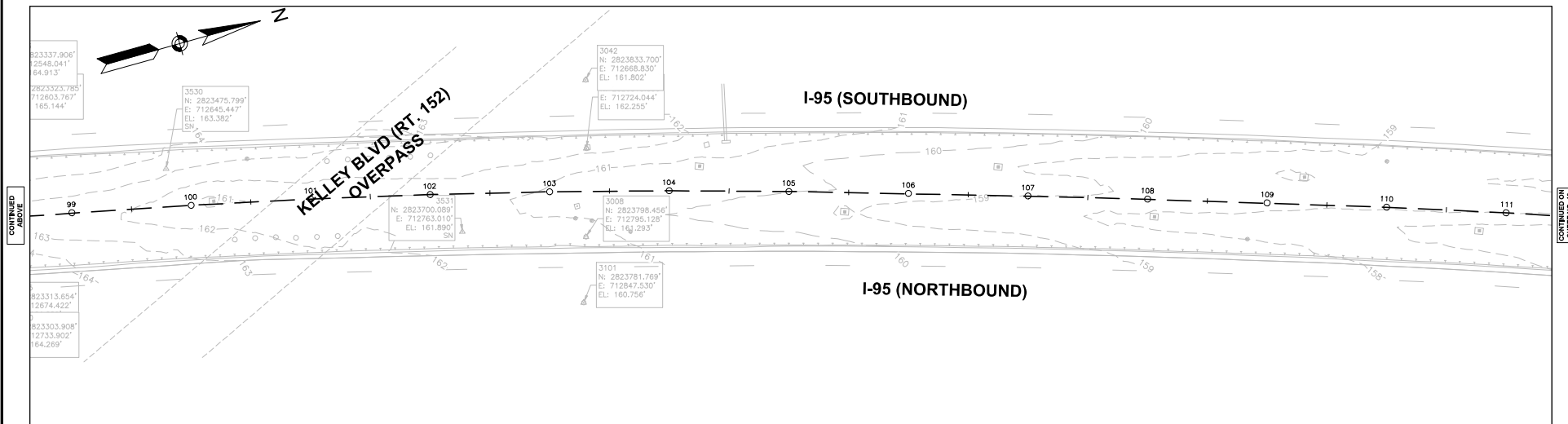
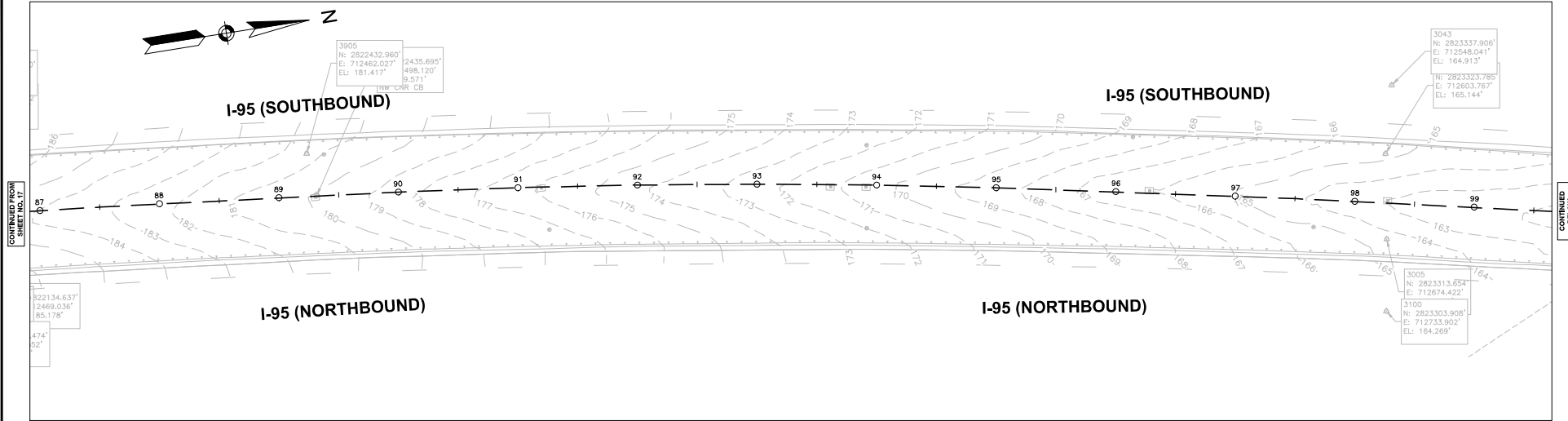
WATER SUPPLY ALTERATIONS  
NONE

DRAINAGE DETAILS  
NONE

ATTLEBORO/NORTH ATTLEBOROUGH  
I-95 MEDIAN CABLE BARRIER INSTALLATION

STATE	FED. AID PROJ. NO.	SHEET NO.	TOTAL SHEETS
MA	HS-095S(133)X	18	23
PROJECT FILE NO. 609433			

CONSTRUCTION PLANS



HIGHWAY GUARD DETAILS  
 PROP. HIGH TENSION CABLE BARRIER END TREATMENT STA. 119+50± RT  
 PROP. HIGH TENSION CABLE BARRIER STA. 119+50± RT TO STA. 141+25± RT  
 (INCLUSIVE OF END TREATMENT)

TRAFFIC SIGNAL CONDUIT  
 NONE

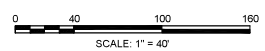
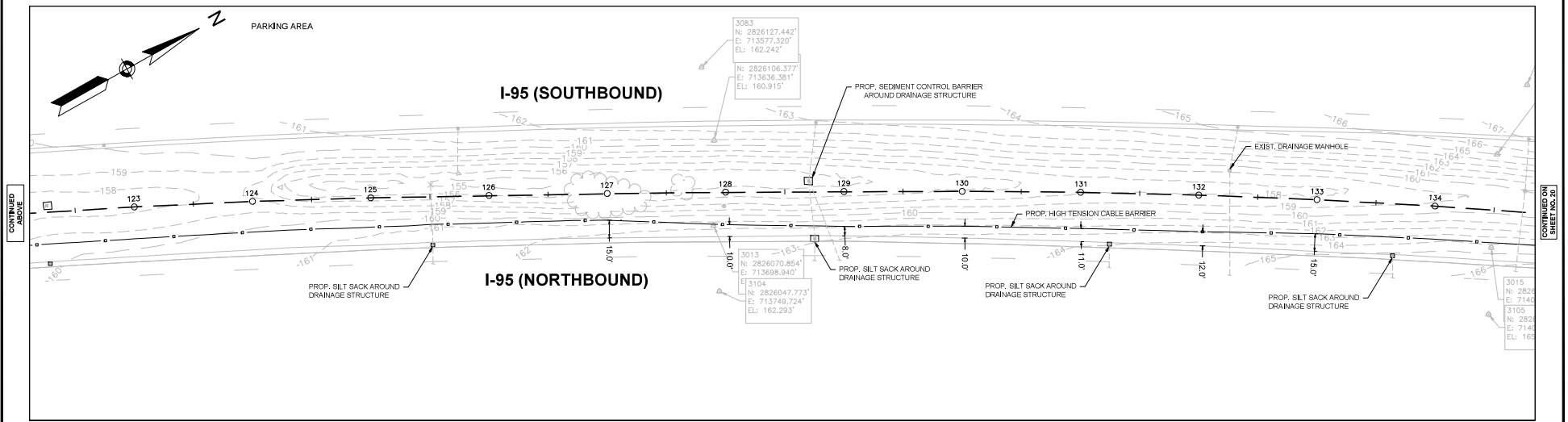
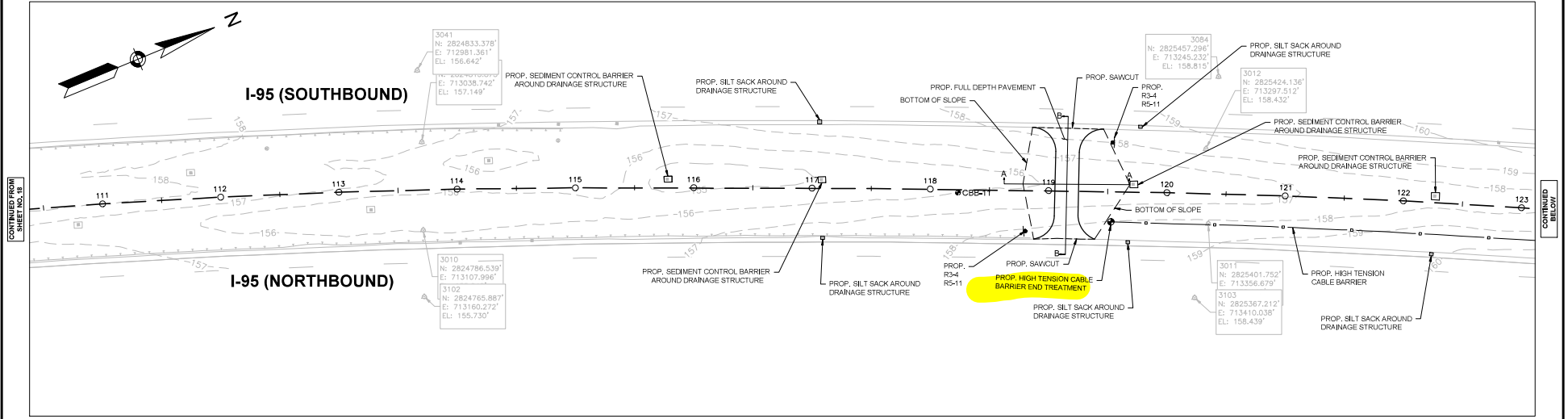
WATER SUPPLY ALTERATIONS  
 NONE

DRAINAGE DETAILS  
 NONE

ATTLEBORO/NORTH ATTLEBOROUGH  
 I-95 MEDIAN CABLE BARRIER INSTALLATION

STATE	FED. AID PROJ. NO.	SHEET NO.	TOTAL SHEETS
MA	HSR-095S(133)X	19	23
PROJECT FILE NO.		609433	

CONSTRUCTION PLANS



CONTINUED FROM SHEET NO. 18

CONTINUED BELOW

CONTINUED ABOVE

CONTINUED ON SHEET NO. 20

HIGHWAY GUARD DETAILS

PROP. HIGH TENSION CABLE BARRIER END TREATMENT STA. 141+25± RT  
PROP. HIGH TENSION CABLE BARRIER STA. 119+50± RT TO STA. 141+25± RT  
(INCLUSIVE OF END TREATMENT)

TRAFFIC SIGNAL CONDUIT

NONE

WATER SUPPLY ALTERATIONS

NONE

DRAINAGE DETAILS

NONE

ATTLEBORO/NORTH ATTLEBOROUGH  
I-95 MEDIAN CABLE BARRIER INSTALLATION

STATE	FED. AID PROJ. NO.	SHEET NO.	TOTAL SHEETS
MA	HS1-095S(133)X	20	23
PROJECT FILE NO.		609433	

CONSTRUCTION PLANS

